

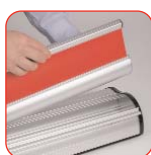


Discovery is a cost-effective single-sided cassette banner packed with new design innovations.

Features & benefits

- Choice of 800 or 1000mm widths
- Available in anodised silver
- Twist-out foot with stylish end mouldings
- Drop-in cassette designed to accommodate graphic media up to 450 microns thick*
- Secure slide in graphic system
- Ratchet tensioner
- Hybrid pole, part bungee and part telescopic
- Supplied with quality foam padded carry bag
- Add your own branding using the slide in graphic channel along the banner base

*Please test your substrate suitability before use



Drop-in
Cassette



Universal
grippa/adhesive
Top rail



Ratchet
Tensioner*



Slide-in
Graphic



Hybrid Pole
(part bungee /
part telescopic)



Add your own
branding if
required

*Graphic tension may be re-applied or added to by turning the ratchet tensioner clockwise; 6 clicks of the ratchet tensioner equal 1 revolution of the banner stand spring. (NB Units are supplied pre-tensioned)

hardware specifications	graphic specifications	additional info
<p>Hardware Dimensions (mm): 2200 max (h) x 860 (w) x 370 (d) approx. 86.6" (h) x 33.9" (w) x 14.6" (d) approx.</p> <p>Base Dimensions (mm): 95 (h) x 860 (w) x 370 (d) approx. 3.7" (h) x 33.9" (w) x 14.6" (d) approx.</p> <p>Weight: 4kg (8.8lbs) approx (including carry bag)</p> <p>Included in kit: Base, top rail, cassette, hybrid pole and carry bag</p>	<p>Visible Graphic Dimensions (mm): 2100 max (h) x 800 or 1000 (w) 82.6" max (h) x 31.5" or 39.4" (w) 1460 min (h) x 800 or 1000 (w) 57.5" min (h) x 31.5" or 39.4" (w)</p> <p>Substrate: Add 300mm (12") to base of graphic to allow for roller mechanism</p> <p>Recommended material thickness 225 - 450 microns (8.86 - 17.72 Mils)</p>	<p>Branding strip</p> <p>Overall Dimensions (mm): 24 (h) x 830 or 1030 (w) 0.94" (h) x 32.7" or 40.6" (w)</p> <p>Visible Dimensions (mm): 20 (h) x 830 or 1030 (w) 0.79" (h) x 32.7" or 40.6" (w)</p> <p>Recommended material thickness: 250 Microns (9.85 Mils)</p>

Assembly Instructions

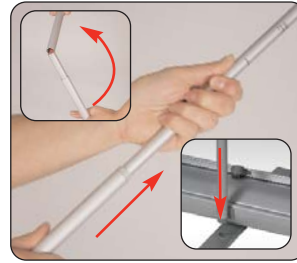
Banner stand assembly



Kit: Hybrid Pole, Base, Cassette and Carry bag

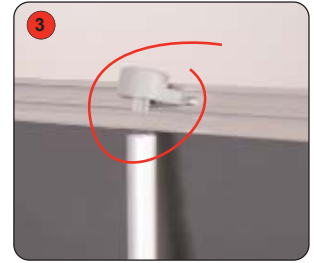


1 Twist out the stabilising foot from the base. Turn unit over.



Open up the bungee part of the pole and lock together, then twist out the telescopic part to desired height.

Twist clockwise to lock, anti clockwise to unlock
Insert the pole into foot.

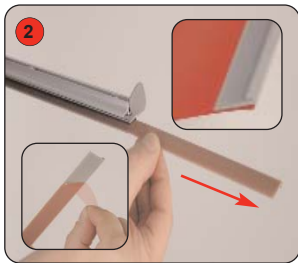


3 Lift the top rail to raise the graphic from the base. Lean the banner backwards and continue to extend the graphic. Secure the graphic into position by locating the top rail onto the pole.

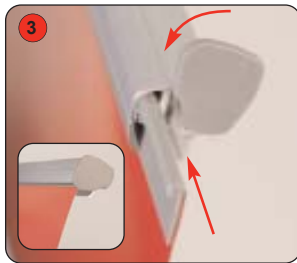
Graphic attachment - Adhesive rail option



1 Rotate the rail end cap to expose the plastic adhesive rail insert.



2 Slide the rail insert from the top rail. Adhere the insert to the front of the graphic.



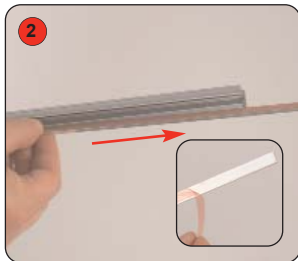
3 Slide the rail insert and graphic into the top rail. Close the rail end cap.

Important: Hold the top rail whilst lowering the banner to prevent damage to the graphic. (do not drop)

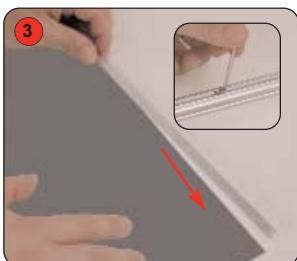
Graphic attachment - Grippa rail option (ideal for textiles and PVC)



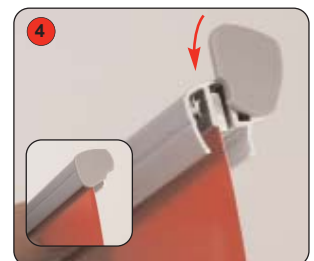
1 Using the Allen key stored in the base, loosen the top rail screws. Rotate the rail end cap to expose the steel flat bar.



2 Slide the flat bar from the top rail and remove the backing paper.



3 Adhere the flat bar to the **back** of the graphic. Slide the flat bar and graphic into the top rail. Tighten the screws to secure the top rail. Close the rail end cap.

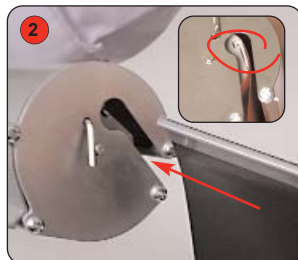


Graphic attachment - Cassette



1 Slide the plastic insert from the cassette & adhere to the **back** of the graphic.

WARNING: Always attach graphic to cassette and top rail before removing the locking pin.



2 Slide the insert and graphic into the cassette, aligning the insert into the channel.



3 Whilst holding the graphic, remove the locking pin from the base and gently allow the graphic to retract.



4 Load the cassette into the base and close the snap retainer to secure.

CAUTION: ensure fingers are clear of the snap retainer when closing.

After fitting, the graphic should be left for 24 hours before use to ensure the adhesive bonds sufficiently. Opening the cassette may invalidate the product warranty.