

Suspended Poster "Cable" Displayer - 500x700mm

Freestanding "Slat board" System

Description:

Combination, Flexible, Innovative, Multifunctional, Display Product
Designed to be utilised in "Single-Sided Format"



Freestanding "Slat board" System

Freestanding Slat board System

Designed for "Ease Of Usage"
Designed for "Self-Assembly"
Stylish Inter-Locking White Slat Wall Panels (Set of 5)

Overall "Assembled" Measurements

Height = H1550mm

Width = W766mm

5x Slat Boards = W766mm x H310mm

Overall "Viewable" Slat Wall Board

H1540mm x W750mm

Advantages:

Can be joined to create a seamless run

Table for displaying products

Permanent = Can be set-up as a permanent display

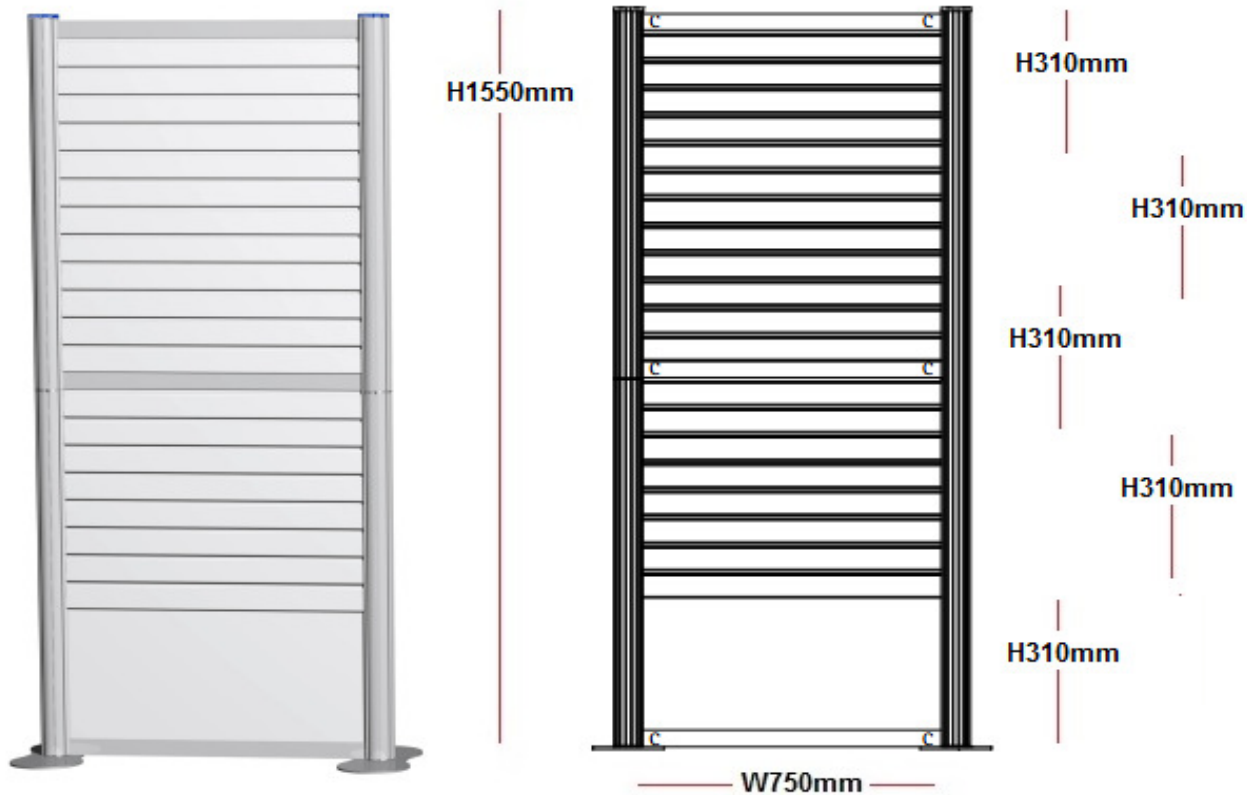
Temporary = Can be assembled quickly for Exhibition Events

Suspended Poster "Cable" Displayer - 500x700mm

Suspended Poster "Cable" Displayer - 500x700mm

Freestanding "Slat board" System

Components:



Parts

Description

4x 775mm Posts

2x Base Plates

3x 750mm Crossbars

(Top + Central + Bottom)

5x Slat Wall Boards

(5x W766mm x H310mm)

1x T-Handle 4mm Hex Key

2x Acrylic Post End Caps

4x Post Clamps

Flexible

Tip 1:

5x Panels allows for ease of

Tip 2:

Only takes minutes to assemble

Tip 3:

No component is longer than 766mm

Tip 4:

Ideal for = Exhibition Events

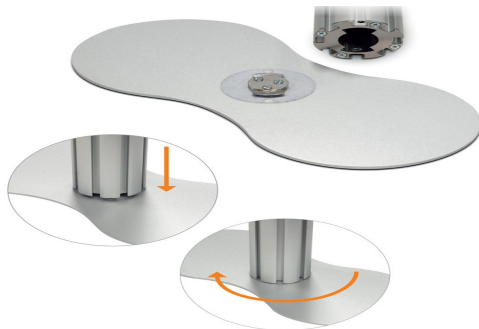
Suspended Poster "Cable" Displayer - 500x700mm

Suspended Poster "Cable" Displayer - 500x700mm

Freestanding "Slat board" System

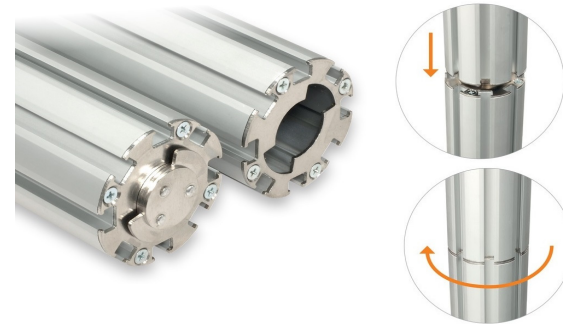
Step 1 - Base and Post (Lower)

1. Place "Base Plates" onto the floor
2. Push down 1x Post onto the base plate connector
3. Twist clockwise to lock into place



Step 2 - Post (Higher)

1. Affix Upper Post to Lower Posts
2. Push down Upper Post into Lower Post
3. Twist clockwise to lock into place



Step 3 - Attaching the Bottom Crossbar

1. Bottom crossbar - "Right Side"
2. Secure using screw with hex key - as image



Step 4 - Attaching the Bottom Crossbar

1. Bottom crossbar - "Left Side"
2. Secure using screw with hex key - as image



Suspended Poster "Cable" Displayer - 500x700mm

Suspended Poster "Cable" Displayer - 500x700mm

Freestanding "Slat board" System

Step 5 - First & Second Slat Board

1. Slot the 1st slat wall panel - top post channels
2. Ensuring the "C" shaped channel is lowermost
3. Slide down the posts and onto footer plate
4. Repeat for 2nd slat wall panel



Step 6 - Central Crossbar

1. Slot clamps of middle 750mm profile into posts
2. Slide crossbar onto top of 2nd slat wall panel
3. Tighten grub screws with hex key



Step 7 - Remaining Slat wall Panels

1. Slot final three slat wall panels into post
2. Slide them down and on top of each other



Step 8 - Top Crossbar

1. Slot clamps of middle 750mm profile into posts
3. Tighten grub screws with hex key



Suspended Poster "Cable" Displayer - 500x700mm

Suspended Poster "Cable" Displayer - 500x700mm

Freestanding "Slat board" System

Step 9 - Extending the Display

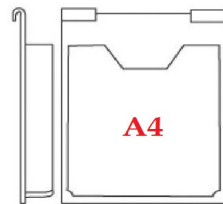
We can help you to create your own "Unique" Exhibition Display
We can also help you with all hangers and fittings for your slat wall panels
Just give us a call - Tel: 01244 371443 or 01244 470902



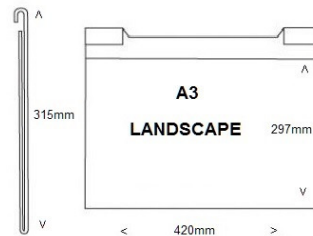
Metal Prongs



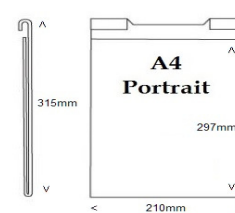
Leaflet Holders



A3 Poster Holders



A4 Poster Holders



Euro Prongs



Suspended Poster "Cable" Displayer - 500x700mm