



Exhibition House - Freshfields, Woodlands Avenue, Chester, Cheshire, CH1 4AT
Tel: 0845 1080047 Website: www.ukexhibition.co.uk Email: info@ukexhibition.co.uk

Glass Shelves – Fitting Instructions

Shelving kits come complete with toughened glass shelves + cables + shelf clamps

Cables are all supplied with 4M lengths - just cut to desired requirement

Here we list the fittings for all four (4)x cable types

Cable type 1 – Budget Ceiling to Floor Fitting – Page 2

Supplied – 4x cables per column

Supplied – 4M length cables – just cut to desired requirement

Cable type 2 - Wall to Ceiling Fitting – Page 3

Supplied – 2x cables per column

Supplied – 4M length cables – just cut to desired requirement

Cable type 3 - Wall to Floor Fitting – Page 4

Supplied – 2x cables per column

Supplied – 4M length cables – just cut to desired requirement

Cable type 4 - Wall to Wall Fitting – Page 5

Supplied – 2x cables per column

Supplied – 4M length cables – just cut to desired requirement

Ceiling to Floor



Ceiling to Floor

Wall to Ceiling



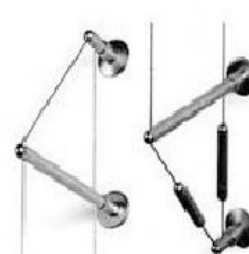
Wall to Ceiling

Wall to Floor



Wall to Floor

Wall to Wall



Wall to Wall

Ceiling to Floor



Ceiling to Floor

Fitting – **Budget Ceiling to Floor Fitting**

Supplied – 4x cables per column

Supplied – 4M length cables – just cut to desired requirement

1. Decide where the fitting will start, we recommend working left to right
2. Instructions are for a single column with 1x glass shelf, if you have ordered more shelves then, just add additional shelves to complete the display

Tip:

We would recommend that you place the shelf on the floor and attach the shelf clamps on the left and right, leaving a recommended gap of 2cms for the ends. Now you have the clamps attached to the shelf, you now have your cable gaps – now go to step 3

3. Drill your first hole, add a raw plug, remove top section, and attach this using a hidden screw
4. Now attach the section with the cable – you should have a cable hanging down
5. Repeat for next holes – at this point you should have 4x cables hanging down
6. Remove the clamps and add 1x clamp to each cable
7. Secure clamp in the desired position / height
8. Secure shelf to all clamps – at this point cables are holding the shelf
9. Now plumb the cable and remove the bottom section holder, secure to floor + replace top section

Make sure you are happy with the cable length, when you are, double check then, cut the cable but, make sure the cable actually touches the floor – repeat for other cables

10. Thread cable into the remain bottom section, tighten using the grub screws
11. Screw bottom section into the floor section, if cable is still loose, repeat step 8
12. When completed the cable should be straight (no slack and not to tight)
13. Repeat for all remaining cables – **Congratulations the fitting is now complete**

Finally:

If you have ordered our acrylic poster displays with this set-up, allow for space for the poster display, also ensure you have added the cable clamps to hold the poster display. We would recommend that you complete the shelf/ shelves first then, add the poster display as the poster display is very easy to fit

14. Poster is held in place by 4x clamps, i.e. 2x clamps on either side

Wall to Ceiling



Wall to Ceiling

Fitting - **Wall to Ceiling Fitting**

Supplied – 4x cables per column

Supplied – 4M length cables – just cut to desired requirement

1. Decide where the fitting will start, we recommend working left to right
2. Instructions are for a single column with 1x glass shelf, if you have ordered more shelves then, just add additional shelves to complete the display

Tip:

We would recommend that you place the shelf on the floor and measure the protruding bar, this bar has holes pre-drilled, these holes give you the wanted cable gaps – now go to step 3

3. Starting from the top – Now you have the gap measurements, add the first top cable section
4. Once this is secure add the remaining part of the top section – you will have cable hanging
5. Repeat this for the remaining top sections – you should have 4x cables hanging loose
6. Decide where the wall protruding section is to go, plumb the wall
7. Drill the required wall section, add raw plus, screw in place – you should have the bar attached
8. Drill the wall again for the bottom section, add screw, and add bottom section to the wall
9. Now for the cable – add the shelf clamps to each cable then:
9. Thread the cable through the protruding bar holes
10. Working from the rear, cut the cable to desired length
11. Thread through the tensioner and secure using the grub screw connector
12. Tighten the tensioner, If still loose, repeat steps 10 and 11
13. Now thread the front section cable and repeat steps 10 to 12
14. Now introduce the shelf, secure with the cable clamps, which you have already added to the cable
15. **Congratulations the fitting is now complete**

Finally:

If you have ordered our acrylic poster displays with this set-up, allow for space for the poster display, also ensure you have added the cable clamps to hold the poster display. We would recommend that you complete the shelf/ shelves first then, add the poster display as the poster display is very easy to fit

16. Poster is held in place by 4x clamps, i.e. 2x clamps on either side

Wall to Floor



Wall to Floor

Fitting - **Wall to Floor Fitting**

1. Decide where the fitting will start, we recommend working left to right
2. Instructions are for a single column with 1x glass shelf, if you have ordered more shelves then, just add additional shelves to complete the display

Tip:

We would recommend that you place the shelf on the floor and measure the protruding bar, this bar has holes pre-drilled, these holes give you the wanted cable gaps – now go to step 3

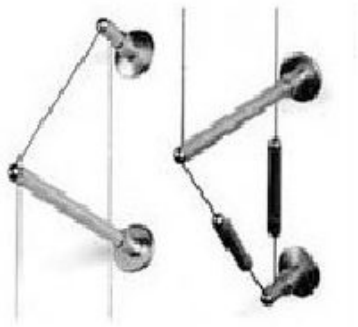
3. Starting from the top – Drill the wall, raw plug, add the tensioner section
4. When added the tensioner section will be secure and have cable hanging loose
5. Move loose cable out of the way
6. Now add the protruding bar, drill, raw plug, screw, secure, re-attach parts
7. Now for the cable
8. Thread cable through the two holes on the protruding bar
9. Once threaded, add the shelving clamps to the cable
10. Repeat this process for the frontal cable, remember to also add the shelving clamps
11. Repeat the whole process for the other cable section, allowing for the width for the shelf – see tip
12. Plumb the cable and secure the bottom section of the floor part, drill, raw plus, screw
13. Re-attach the remaining of the bottom section
14. Straighten the cable so it touches the floor, then, cut the cable
15. Insert cut cable into the bottom section – it grips automatically
16. If still loose, re-cut the cable bit-by-bit and repeat step 15
17. Now introduce the shelf, secure with the cable clamps, which you have already added to the cable
18. **Congratulations the fitting is now complete**

Finally:

If you have ordered our acrylic poster displays with this set-up, allow for space for the poster display, also ensure you have added the cable clamps to hold the poster display. We would recommend that you complete the shelf/ shelves first then, add the poster display as the poster display is very easy to fit

19. Poster is held in place by 4x clamps, i.e. 2x clamps on either side

Wall to Wall



Wall to Wall

Fitting – **Wall to Wall Fitting**

1. Decide where the fitting will start, we recommend working left to right
2. Instructions are for a single column with 1x glass shelf, if you have ordered more shelves then, just add additional shelves to complete the display

Tip:

We would recommend that you place the shelf on the floor and measure the protruding bar, this bar has holes pre-drilled, these holes give you the wanted cable gaps – now go to step 3

3. Starting from the top – Drill the wall, raw plug, add the tensioner section
4. When added the tensioner section will be secure and have cable hanging loose
5. Move loose cable out of the way
6. Now add the protruding bar, drill, raw plug, screw, secure, re-attach parts
7. Now for the cable
8. Thread cable through the two holes on the protruding bar
9. Once threaded, add the shelving clamps to the cable
10. Repeat this process for the front cable, remember to also add the shelving clamps
11. Repeat the whole process for the other cable section, allowing for the width for the shelf – see tip
12. Plumb the cable and mark your wall for the bottom holder
13. Attach the protruding bar as step 8
14. Attach the tension section as step 4
15. Cable, final steps – thread cable through protruding bar
16. Remove the tensioner section parts and decide how long the cable is required, cut the cable
17. Re-attach the tensioner section and tighten to remove the slack from the cable
18. If the cable is still slack, repeat steps 16 and 17
19. Repeat this process for the front cable then, repeat the whole process for the other cable
20. Now introduce the shelf, secure with the cable clamps, which you have already added to the cable
21. **Congratulations the fitting is now complete**

Finally:

If you have ordered our acrylic poster displays with this set-up, allow for space for the poster display, also ensure you have added the cable clamps to hold the poster display. We would recommend that you complete the shelf/ shelves first then, add the poster display as the poster display is very easy to fit

22. Poster is held in place by 4x clamps, i.e. 2x clamps on either side