

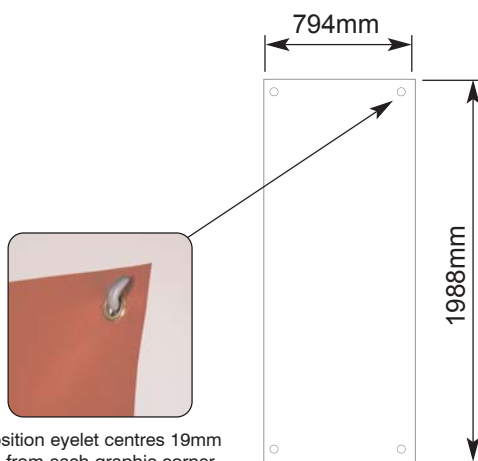


Hydro 2

Hydro 2 is built for durability and strength and is ideal for indoor or outdoor promotions. The moulded base can be filled with either water or sand, making it especially suitable for high traffic areas indoors or poor weather conditions outdoors.

features & benefits

- Suitable for indoor or outdoor use
- Can be used as a double or single sided unit
- Ideal for point of sale, retail display or exhibitions
- Moulded plastic base for water or sand weighting
- Supported on a simple eyelet system
- Weather resistant
- Supplied with carry bag
- Designed to withstand approximate wind speeds of 13-18 miles per hour (Beaufort scale 4)



Graphic dimensions and eyelet positioning (dimensions shown are approx)



hardware specifications	graphic specifications	additional info
<p>Assembled dimensions (mm): 2235 (h) x 813 (w) x 533 (d) approx</p> <p>Base footprint dimensions (mm): 533 x 394 approx</p> <p>Weight: 7.7kg approx when empty 20.6kg approx when filled with water</p>	<p>Visible graphic dimensions: 1988 (h) x 794 (w) approx</p> <p>Recommended graphic substrate: Lightweight outdoor textiles (solid or mesh type substrates)</p> <p>Eyelets: Graphic requires 4 off eyelets with a 10.5mm minimum internal eyelet diameter See above diagram for eyelet positioning</p>	<p>Included in kit: Base, support arms and carry bag.</p> <p>Availability: Dark Grey base, mid grey support arms</p> <p>Recommended accessories: AB120A 850 x 150mm dia Banner tube (to transport graphics safely)</p>

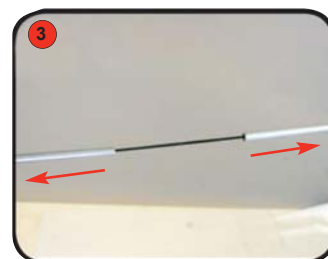
Assembly Instructions



Kit includes: Base, support arms and carry bag.



Position the base.



Pull apart the set of connected poles to reveal the elastic cord.



Position elastic cord through slot in the base.



Join the two poles together through the slot in the base.



Ensure the pole hooks extend upwards



Assemble the remaining bungee support poles.



Insert the narrow end of the assembled poles into the base holes.



Ensure the support poles are inserted into the base holes furthest from the support arms.



Remove cap and fill the base with water or sand.



Attach the graphic eyelets to the support pole hooks.



When using a double sided banner stand, repeat steps 3 to 11 with the second set of hardware and graphics.