

Linear Kit 9

For showroom, point of sale, demonstration and exhibition environments Linear kit 9 is the ideal solution as a display and information centre.



features & benefits

- Overall assembled size 2000mm (h) x 845mm (w) x 450mm (d) approx
- Anodised aluminium construction
- Portable, easy assembly
- Available with 75mm round post
- 450mm dia steel dome bases supplied as standard
- Supplied with 3 adjustable A4 leaflet holders
- Choice of two recommended graphic fixing options: Rigid infill or mag taped graphics
- Kits are supplied with steel tape pre-applied on one side ready to accept mag taped graphics



450mm dia Steel dome
extra cost option

(weight 6kg approx)

Recommended
carry bag: LPB



Pocket depth:
20mm approx
(weight 1.5kg approx)

Vertical position and
angle of the leaflet
holder can be adjusted

Graphic fixing options



Rigid infill



Mag taped

hardware & graphic specifications

Hardware dimensions (mm):

2000 (h) x 845 (w) x 450 (d)
approx

Weight:

17kg approx

Recommended graphic substrates:

Rigid infill:

5mm thick foam board

Mag taped:

300micron polyester

Visible graphic dimensions (mm):

Rigid infill (2 individual panels):

944 (h) x 422 (w) actual

932 (h) x 410 (w) visible

Rigid infill (1 panel):

1922(h) x 422 (w) actual

1910 (h) x 410 (w) visible

Mag taped graphic (1 panel):

2000 (h) x 500 (w) actual

2000 (h) x 500 (w) visible

additional info

Recommended accessories:



AC504
Wheeled
carry case



PS1000
200watt light
(see over for
fixing method)

Assembly Instructions

Linear Kit 9 includes:

450mm dia Steel dome
base & M10 bolt
(weight 6kg approx)

Leaflet holder kit x 3
(weight 4.5kg approx)

Male post x 2
(weight 1kg approx)

955mm female beam 'A' x 2
(weight 1.5kg approx)

955mm male beam 'B' x 2
(weight 1.5kg approx)

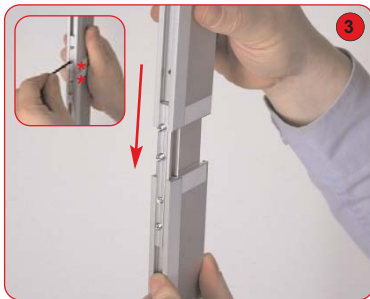
Female post x 1
(weight 1kg approx)

500mm horizontal beam 'C' x 2
(weight 1kg approx)

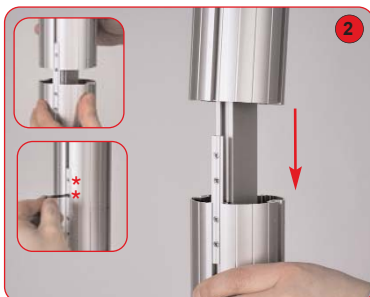
410mm horizontal beam 'D' x 1
(weight 0.5kg approx)

Allen key set

PVC clear
washer x 2



Attach 1000mm male beam to 1000mm female beam. Secure grub screws using a 2mm allen key. Repeat step for remaining vertical beams.



Align and slide female post over male post, tighten both grub screws using a 2mm allen key.

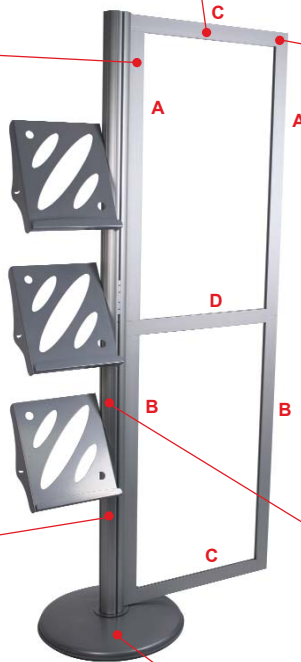
NB If applicable, ensure all applied steel tape is facing to the correct side during assembly.



Optional PS1000 lights (not supplied with the kit) can be fitted to the graphics rail using US-LINEAR lighting bracket.



Attach horizontal beams to the vertical frame sides. Tighten locks using a 5mm allen key. If using rigid infill graphics, slide these in to position before tightening beams. Once frame is assembled attach to vertical post. Tighten locks using a 5mm allen key.



Attach base to male post using M10 bolt and allen key. Ensure clear washer is between base & post.



Attach leaflet holder to the post. Slide flat bar of holder into the channel of linear post. **Ensure thumb fastener threads are flush to the flat bar.** Position & angle holder to suit, tighten both thumb fasteners to secure the holder to the post. Repeat step for remaining holders.