

Reflecta Pod



2m Reflecta Pod

A range of graphics pods and lightboxes, perfect for demonstration units or for instore displays and exhibitions.

features & benefits

- Multi-purpose promotional unit
- Graphic pod or Illuminated Lightbox
- Strong and stylish ellipse design
- 1 metre or 2 metre heights
- Single or double sided
- Packs flat for transit and storage
- Require 3mm thick substrates - not included

technical information

- *Lightbox complete with TFL cool fluorescent tube(s), 1.5metre mains lead & plug*
- *Recommended graphic materials:*
3mm thick Opaque acrylic for Lightboxes
3mm Foamex for Graphic Pods
- *Suitable for indoor use only*



1m Reflecta Pod

hardware specifications

Assembled Dimensions (mm):
2m units (MR912 & MR102)
2000 (h) x 1100 (w) x 400 (d) approx.
MR912 Lightbox Weight: 10.5kg approx.
MR102 Graphic Pod Weight: 9kg approx

1m units (MR911 & MR101)
1000 (h) x 1100 (w) x 400 (d) approx.
MR911 Weight: 8.5kg approx.
MR101 Weight: 7kg approx.

graphic specifications

Graphic Dimensions (mm):
2m units (MR912 & MR102)
2000 (h) x 1000 (w) x 3 thick approx.
Visible Graphic Dimensions (mm):
1975 (h) x 980 (w) approx.

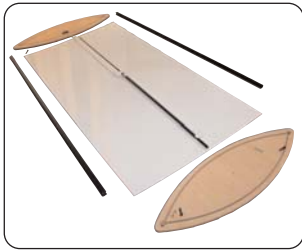
1m units (MR911 & MR101)
1000 (h) x 1000 (w) x 3 thick approx.
Visible Graphic Dimensions (mm):
975 (h) x 980 (w) approx.

additional info

Availability:
Beech base and top, anodised aluminium posts.

Weights detailed do not include graphic substrates or transit packaging.

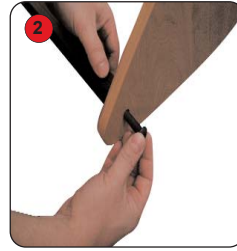
Assembly Instructions



Kit includes: Top, Base, Aluminium posts (x2) M10 bolts (x4), M8 screws (x2) and lighting post/ tubes (if applicable)
(Note graphic substrates are not included)



1 Insert the 1st aluminium post into the base.



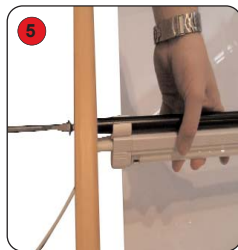
2 Secure the post using 1 M10 bolt, tighten using an M10 Allen key. Repeat steps 1 & 2 for 2nd post.



3 Attach the lighting post (if applicable) to the base using 1 M8 flat head screw.



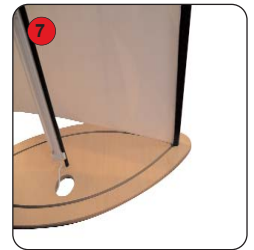
4 Tighten the M8 screw using a flat head screwdriver.



5 Repeat steps 1 to 4 to attach the top. Only loosely affix the top to the posts.



6 Stand the unit up.



7 Place the graphic substrate into the base channel.



8 Feed the vertical edge of the graphic substrate into the 1st aluminium post.



9 If required, loosen the top fixings. Fit the remainder of the graphic substrate into the 2nd post.



10 Fit the the graphic substrate into the top and into the 2nd aluminium post.



11 Ensure the fluorescent lights are switched on. (If applicable)



12 Feed the 2nd graphic substrate into the base channel.



13 Fit the the graphic substrate into the top and into the 2nd aluminium post.



14 Adjustment may be necessary to locate the graphic substrate into the top channel.



15 Tighten the top fixings using a flat head screwdriver and M10 Allen key.