

Advance / Advance 2



With refined styling and a streamlined profile Advance is packed with new design innovations. Available as a double sided system this removable cassette banner has been specially designed for maximum convenience and ease of use.

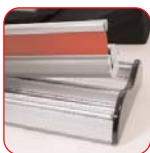
features & benefits

- Choice of 800 or 1000mm widths
- Can be used as a single or double sided banner
- Available in anodised silver with charcoal grey end caps
- Drop-in cassette(s) designed to accommodate graphic media up to 450 microns thick*
- Secure slide in graphic system
- Ratchet tensioner
- Twist & lock telescopic pole
- Supplied with quality foam padded carry bag
- Add your own branding using the slide in graphic channels along the banner base

*Please test your substrate suitability before use



Advance 2



Drop-in
Cassette(s)



Universal
gripper/adhesive
Top rail



Ratchet
Tensioner*



Slide-in
Graphic



Integral Pole
Storage



Telescopic
Pole



Add your own
branding if
required

*Graphic tension may be re-applied or added to by turning the ratchet tensioner clockwise; 6 clicks of the ratchet tensioner equal 1 revolution of the banner stand spring. (NB Units are supplied pre-tensioned)

hardware specifications	graphic specifications	additional info
<p>Hardware Dimensions (mm): 2210 max (h) x 865 (w) x 280 (d) approx. 87.40" (h) x 34.10" (w) x 11.0" (d) approx.</p> <p>Base Dimensions (mm): 95 (h) x 865 (w) x 280 (d) approx. 3.75" (h) x 34.10" (w) x 11.0" (d) approx.</p> <p>Weight: 7.5kg (16.5lbs) approx (inc carry bag)</p> <p>Included in kit: Base, 2 cassettes, 2 top rails, telescopic pole and carry bag</p>	<p>Visible Graphic Dimensions (mm): 2130 max (h) x 800 or 1000 (w) 83.85" max (h) x 31.50" or 39.37" (w)</p> <p>750 min (h) x 800 or 1000 (w) 29.53" min (h) x 31.50" or 39.37" (w)</p> <p>Substrate: Add 300mm (12") to base of graphic to allow for roller mechanism</p> <p>Recommened material thickness 225 - 450 microns (8.86 - 17.72 Mils)</p>	<p>Branding strip</p> <p>Overall Dimensions (mm): 24 (h) x 830 or 1030 (w) 0.94" (h) x 32.7" or 40.6" (w)</p> <p>Visible Dimensions (mm): 20 (h) x 830 or 1030 (w) 0.79" (h) x 32.7" or 40.6" (w)</p> <p>Recommened material thickness: 250 Microns (9.85 Mils)</p>

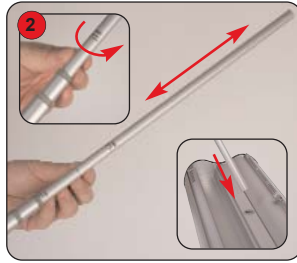
We are continually improving and modifying our product range and reserve the right to vary the specifications without prior notice. All dimensions and weights quoted are approximate and we accept no responsibility for variance. E&OE.

Assembly Instructions

Banner stand assembly



Turn the base over and open the pole retainers. Remove the pole from the base. **Important: Close the pole retainers before using the banner stand.**



Set the telescopic pole to the desired graphic height. **Twist clockwise to lock, anti-clockwise to unlock.** Fit the pole into the base.

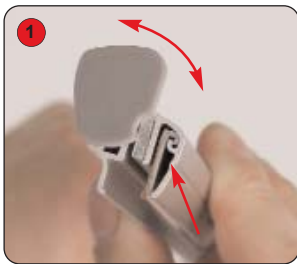


Lift the top rail to raise the graphic from the base. Lean the banner stand backwards and continue to extend the graphic.

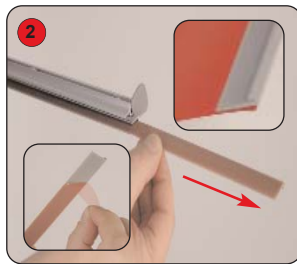


Secure the graphic into position by locating the top rail onto the pole. For double sided banners place the pole doubler onto the pole. Raise both top rails then secure onto the pole doubler. **NB Pole doubler is stored in a pocket inside the carry bag.**

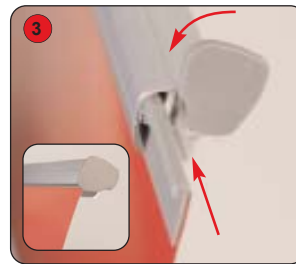
Graphic attachment - Adhesive rail option



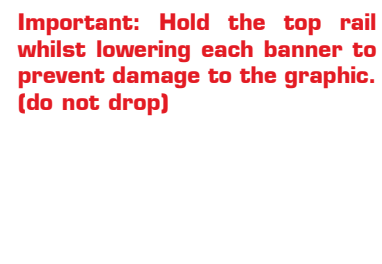
Rotate the rail end cap to expose the plastic adhesive rail insert.



Slide the rail insert from the top rail. Adhere the insert to the **front** of the graphic.

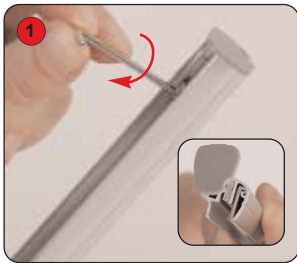


Slide the rail insert and graphic into the top rail. Close the rail end cap.

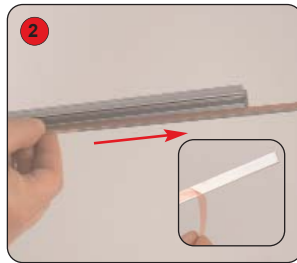


Important: Hold the top rail whilst lowering each banner to prevent damage to the graphic. (do not drop)

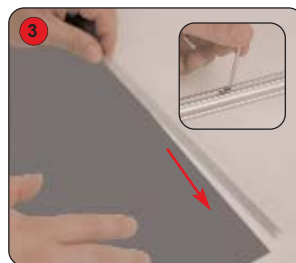
Graphic attachment - Grippa rail option (ideal for textiles and PVC)



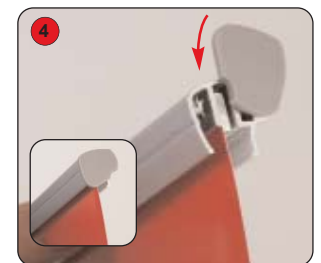
Using the Allen key stored in the base, loosen the top rail screws. Rotate the rail end cap to expose the steel flat bar.



Slide the flat bar from the top rail and remove the backing paper.



Adhere the flat bar to the **back** of the graphic. Slide the flat bar and graphic into the top rail. Tighten the screws to secure the top rail. Close the rail end cap.



Graphic attachment - Cassette



Slide the plastic insert from the cassette & adhere to the **back** of the graphic.



Slide the insert and graphic into the cassette, aligning the insert into the channel.



Whilst holding the graphic, remove the locking pin from the base and gently allow the graphic to retract.



Load the cassette into the base and close the snap retainer to secure. **CAUTION: ensure fingers are clear of the snap retainer when closing.**

WARNING: Always attach graphic to cassette and top rail before removing the locking pin.

After fitting, the graphic should be left for 24 hours before use to ensure the adhesive bonds sufficiently. Opening the cassette may invalidate the product warranty.